

AOS EAGLE

45M WORK / UTILITY VESSEL



PRINCIPAL PARTICULARS

Length Overall:	45.00 m
Length BP:	40.32 m
Breadth Moulded:	13.00 m
Depth Moulded:	4.20 m
Draft Maximum:	3.00 m
Year Built:	2018
GRT/NRT:	1033 / 310
Class:	ABS
Flag:	PANAMA
Call Sign:	HP8693

CARGO CAPACITIES

Deadweight:	
Work / Cargo Space:	About 175 m ²
W/C Design Load:	3.50 T/m ²
Potable Water:	146.80 m ³
Ship/Cargo FO:	244.90 m ³
Drill/Ballast Water:	273.70 m ³
Slop/Recoil Tank:	59.60 m ³
Lubricating Oil:	12.00 m ³
Dirty Oil:	10.70 m ³
Sewage Holding Tank:	12.10 m ³
Bilge Tank:	10.50 m ³

ACCOMMODATION

Suites:	1 Man x 2
Single Cabin:	1 Man x 2
Twin Cabin:	2 Men x 13
Total:	30 Men

PROPULSION SYSTEM

Main Engines:	2 x 1300 BHP @ 2100 RPM CAT C32, IMO-TII, Heavy Duty
Reduction Gears:	REINTJES GMBH-LAF 675L K31A
Main Generator:	2 x Cummins, 340kW, 60Hz, 440V CCFJ340-Z-W-MYCM
Main Alternator:	2 x Leroy Somer, LSAM47.2 S4
Shaft Generator:	2 x Leroy Somer, 600kW, 60Hz, LSAM49.3 M6
Emergency Generator:	1 x Cummins, 90kW, 60Hz, 450V CCFJ90-Y-W-MYCM Alternator: LSAM 44.3 S5
Bow Thruster:	1 x 6T CPP – CAT MTT113 CL-02
Propellers:	2 x CPP – CAT – MPP 490, 4 Blades Prime Mover Power: 970kW Propeller Speed: 265 RPM Propeller Diameter: 2000 mm
Rudders:	2 x High Lift Flap Spade Type
Steering Gear:	2 x JASTRAM Electro Hydraulic Independent Type, Twin S2-40-1-35

PERFORMANCE

Maximum Speed:	
Economical Speed:	12.30 knots, 85% MCR

DISCHARGE RATES

FW Cargo Pump:	90 m ³ /hr @ 30 m head
FO Cargo Pump:	92 m ³ /hr @ 30 m head
Dirty Oil / Sludge Pump:	5 m ³ /hr @ 45 m head
Bilge Pump:	2 x 35 m ³ /hr @ 25 m head

DECK EQUIPMENT

Windlass:	1 MacGregor x 5 T @ 9m/min
Anchor:	2 x 1230 Kg
Chains:	Total of 660m x 30 mm
Capstan:	2 x 5T @ 15 m/min
Tugger Winch:	2 x 5T @ 10 m/min
Deck Crane:	1 x MacGregor Fixed Hydraulic with Telescopic Boom, Extended Length 18.30m 10 T @ 3.10 m Working Radius 1.5 T @ 15.30 m Radius

LIFE SAVING & HSE

Search Lights:	2 x 2000 W
Floodlights:	6 x 500 W
Life Rafts:	6 x 15 Men
Lifejackets:	34 Nos.
Lifebuoys:	8 Nos.
Rescue Boats:	1 x Rescue Boat, 6 PAX

FIRE-FIGHTING

CO2 System:	Machinery Spaces, Paint Locker & Galley
Fire Monitor:	2 x 350 m ³ /hr Horizontal Throw 70m
Centrifugal Pump:	730 m ³ /hr @ 50m head

GALLEY & LAUNDRY

Electric Cooking Range:	1 x 4 Hot Plates
Refrigerator Capacity:	300 Litres
Freezer Capacity:	10.0 m ³
Chiller Capacity:	10.0 m ³
Electric Water Boiler:	2 x 30 Litres
Washing Machine:	3 x 10 Kgs
Dryers:	3 x 6 Kgs
Foldable Iron:	1 with Ironing Table

MISCELLANEOUS

Sewage Treatment:	1 x WCMBR-40(U) Treatment Plant for 40 Men Sewage Discharge Pump 3.0 m ³ /hr
Freshwater Maker:	1 Set – HSRO-08B / 8.0 T Per Day
Oil Water Separator:	1 Set – YSZ1.0 – 1.0 m ³ /hr

OIL SPILL & RECOVERY EQUIPMENT (LAMOR) I

Storage:	1 x 20 Feet Container with End and Side Doors - ISO DNV 2.7 - 1/EN 12079-1, CSC-395313
Primary System:	1 x Side Collector - LSC 3C/MKII- 222536 of Capacity 152 m ³ /hr
Primary Oil:	1 x GTA PDAS - 226149
Transfer Pump:	Capacity: 140 m ³ /hr @ 10 Bar Spare Pump of same Capacity
Discharge Pumps:	2 x Oil Discharge Pumps with Capacity: 140 m ³ /hr @ 10 Bar each

Decanting System:

1 x Decanting Pump with 5m Suction Hose and 10m
Discharge Hose

Portable Cleaning System:

1 x Portable High Pressure Hot Water Cleaning System
Provided with Machines, with a flow range of 0.81 m³/hr
@ 100 bar

Dispersant Spray System:

1 x Dispersant Pump with Flow Meter – LDS 150E-SA-3
2 x Dispersant Spray Arms of Aluminum of 12 m Length

Interface System:

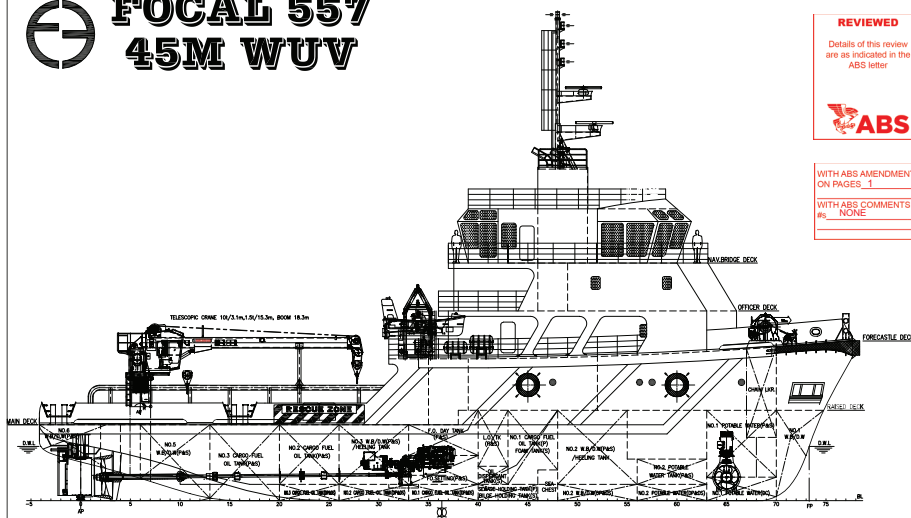
1 x Oil Water Interface Detector Ullage Temp UTI Meter

Oil Spill Detection Radar:

1 x Rutter RADAR FLIR Camera with Detection Range of
4NM



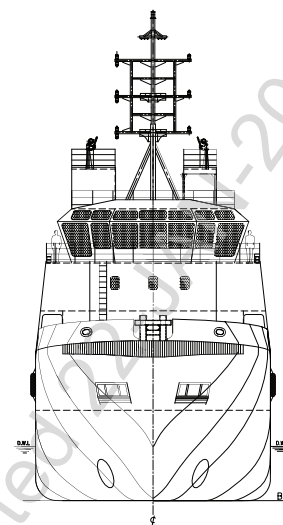
FOCAL 557 45M WUV



REVIEWED
Details of this review are as indicated in the ABS letter

ABS

WITH ABS AMENDMENTS ON PAGES 1
WITH ABS COMMENTS NONE



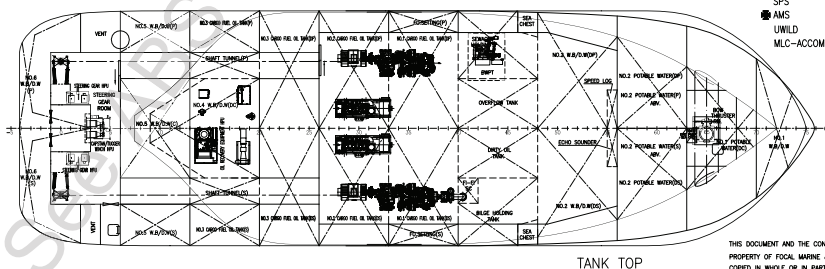
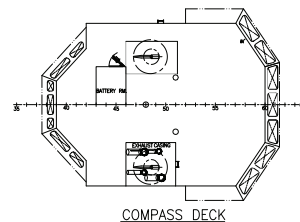
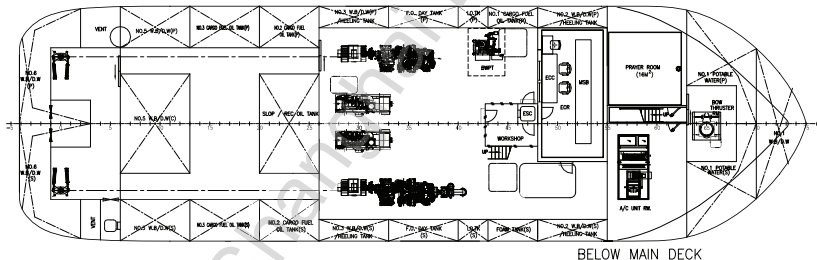
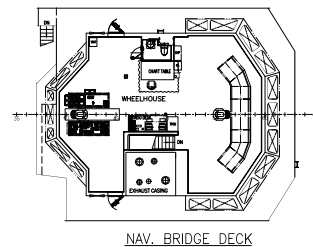
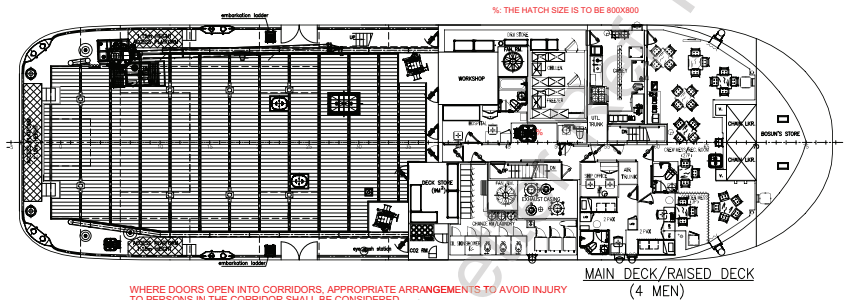
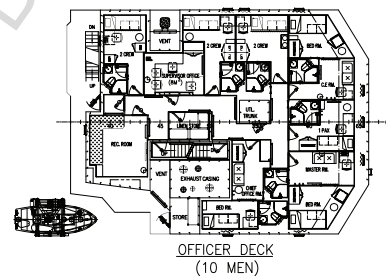
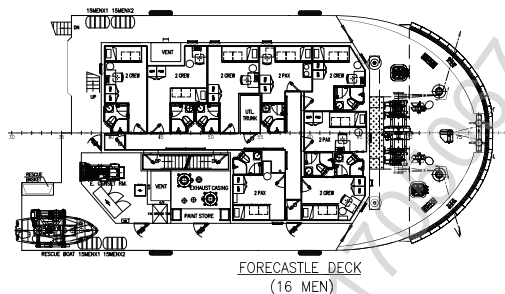
PRINCIPAL PARTICULARS & CAPACITIES

LENGTH OA 45.00M
LENGTH BP 40.32M
BEAM MLD 13.00M
DEPTH MLD 4.20M
DRAFT SCANTLING 3.30M
DRAFT DESIGNED 3.00M
COMPLEMENT 30 MEN

MAIN ENGINE 2 x 1,300 HP
TRIAL SPEED 12.5 KTS

CARGO DK AREA 175 M²
DK LOADING 3.5 T / M²

FUEL OIL 230 M³
W.B/D.W 130 M³
POTABLE WATER 120 M³
SLOP / REC OIL TANK 50 M³



CLASS: ABS A1 C OFFSHORE SUPPORT VESSEL
(SUPPLY, OSR-C2)
SPS
AMS
UWLD
MLC-ACCOM

THIS DOCUMENT AND THE CONTENT ARE COPYRIGHT AND REMAIN PROPERTY OF FOCAL MARINE & OFFSHORE. THEY MUST NOT BE COPIED IN WHOLE OR IN PART TO ANY THIRD PARTY FOR ANY PURPOSE WITHOUT PRIOR WRITTEN PERMISSION FROM FOCAL MARINE & OFFSHORE. THE RECEIPT OF THIS DOCUMENT IMPLIES ACCEPTANCE OF THIS CONDITION.

REV NO.	AMENDED PER BUILT ON SITE	ZF	DEC-27-2017
OWNER	ATLANTIC MARITIME GROUP FZE	BY	DATE
BUILDER	WUCHANG SHIPBUILDING INDUSTRY CO., LTD		
PROJECT	45M WORK / UTILITY VESSEL "FOCAL 557"		
APPROVE	DWG TITLE: GENERAL ARRANGEMENT	JOB NO.:	P-1927
CHECKER		DWG NO.:	P-1927-001
DRAWER	ZF	SCALE:	1:1125 (A1)
		CLASS:	ABS
		FOCAL MARINE & OFFSHORE	
		SHANGHAI TEL: 86-21-58705786	SINGAPORE TEL: 65-68481367
		FAX: 86-21-50313265	FAX: 65-68481381