



PRINCIPAL PARTICULARS

Length Overall:	76-2 m
Breadth Moulded:	24.38 m
Depth Moulded:	4.88 m
Draft (max):	3.7 m
Year Built:	2006
GRT/NRT:	2220 / 666
Class:	ABS
Flag:	UAE

DECK & CARGO CAPACITIES

Deadweight:	5,300 t (approx)
Deck Strength:	15 T/m ²
Deck Equipment:	<ul style="list-style-type: none">- Anchor- Anchor Winch- Recovery Winch- Mooring Ropes- 2 x Life Rings- Stern Lights: Red- STB Lights: Green- Stern: White- 1 x Diamond shape

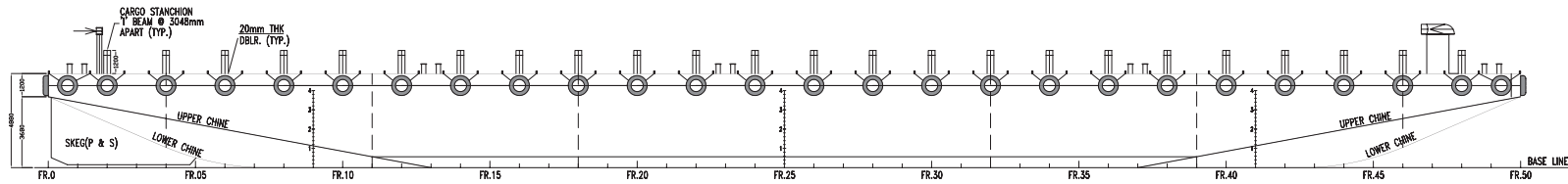
DESCRIPTION

Emergency Towing Gear:

- 8 x 2-1/2 Safety Bow Shackles, SWL: 55T
- 1 x Delta Plate, Proof Load: 60 T
- 2 x Masterlink 65 mm dia.
- 2 x 52 mm x 18 m Single Leg Steel wire rope w/ thimble eye on both ends, SWL: 35.0 T
- 1 x 44 mm x 18 m Single Leg Steel wire rope w/ thimble eye on both ends, SWL: 35.0 T

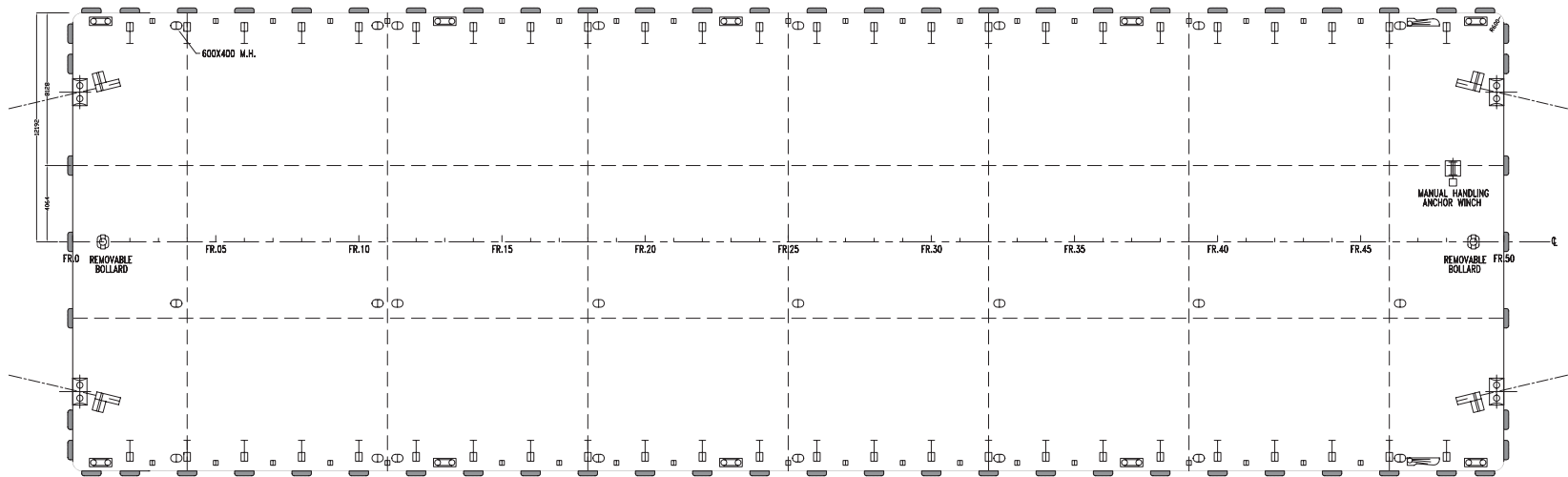
Main Towing Gear:

- 7 x 2-1/2" dia. Safety Bow Shackles, SWT: 55 T
- 1 x Delta Plate, Proof Load: 60 T
- 2 x Stud Link Anchor Chain 52 mm dia x 7.7 m breaking load: 1480 kN
- 2 x Masterlink, SWL: 55 T
- 2 x 52 mm x 12 m Single Leg Steel wire rope w/ thimble eye on both ends, SWL: 35.0 T
- 1 x 52 mm x 18 m Single Leg Steel wire rope w/ thimble eye on both ends, SWL: 35.0 T



FRAME SPACING 1524mm (5') APART

OUTBOARD PROFILE



MAIN DECK PLAN

PRINCIPAL DIMENSIONS

LENGTH OVERALL	76.200 M (250'-0")
BREADTH MOULDED	24.364 M (80'-0")
DEPTH MOULDED	4.880 M (16'-0")
DRAFT MOULDED	3.600 M (12'-6")
DECK LOADING	15 MT/M

ISSUED FOR INFORMATION ONLY						
REV	DATE	DESCRIPTION	BY	CHKD.	APPR.	
CLIENT :			ATLANTIC OFFSHORE			
TITLE :			GENERAL ARRANGEMENT			
BUILDER:			YARD NO: NYTES006-05/06			
PROJECT:	250' X 80' X 16'		SHEET:	1 OF 1	SCALE:	1:125
	DECK CARGO / TANK BARGE		VESSEL:	SLDP-P179	SIZE:	A1
	CLASS: ABS + A1 DECK / TANK BARGE		DRAWING NO:	SLDP-P179-001	REV:	0