

AOS VICTORY

Anchor Handling Tug Supply Vessel – DP 2



PRINCIPAL PARTICULARS

Length Overall:	60.50 m
Length Waterline:	58.15 m
Breadth Moulded:	15.80 m
Depth Moulded:	6.50 m
Draft (designed):	5.10 m
Year Built:	2014
GRT/NRT:	2081 / 624
Class:	ABS
Flag:	Panama
Call Sign:	3FWV6

CARGO CAPACITIES

Deadweight @ SLL:	1322.23 T
Deck Cargo:	500 T
Deck Strength:	7 T/m2
Clear Deck Area:	360 m2
Fuel Oil:	596.8 m3
Fresh Water:	407.6 m3
Drill Water / SWB:	594.3 m3
Liquid Mud:	271.2 m3
Bulk Mud:	4 x 42.5 m3
Freezer:	20 m3
Cooler:	20 m3
Foam:	13 m3
Dispersant:	13 m3

PROPULSION SYSTEM

Main Engines:	2 x Caterpillar MAK 8M25C 2 x 2400 kW; 6,400 bhp
Reduction Gears:	2 x Reintjes LAF 2355 ratio 4:120:1
Shaft Generator:	2 x 1000 kW main engine driven 415 V/ 3 ph/ 50Hz/ 1000kW
Main Generator:	3 x 400 kW diesel driven 415 V/ 3 ph/ 50 Hz/ 400kW
Emergency Generator:	1 x 80 kW
Bow Thruster:	2 x 8.0T electric driven
Stern Thruster:	1 x 8.0T electric driven
Propellers:	2 x controllable pitch propeller 4-bladed, 3337 mm dia.
Rudders:	2 x double plate flat type
Steering Gear:	2 x independent electro-hydraulic

PERFORMANCE

Maximum Speed:	13.5 knots
Economical Speed:	10 knots

DECK EQUIPMENT

Windlass:	10T @ 12m/min @ 40 mm dia.
Anchors:	2 x 1305 kg
Chains:	220 m x 40 mm dia.
Capstan:	2 x 5T @ 15 m/min
Tugger Winch:	2 x 10T @ 15 m/min
Rope Reel:	1 x 5T @ 15 m/min Cap: 1000 m (L) x 56 mm dia.
Deck Crane:	3T @ 10 m

TOWING/ANCHOR HANDLING

Bollard Pull:	80 T
Winch:	1 x 150T line pull
Stern Roller:	4.5 m x 1.5 m SWL:250 MT
Shark Jaw & Towing Pins:	200T hydraulic operated type

RADIO AND NAVIGATION

GMDSS:	Area A1+A2+A3
SSB	1 x Furuno FS-2575
VHF:	2 x Furuno FM8900S
MF/HF DSC:	1 x Furuno Rc-1800T (250W)
Inmarsat C:	2 x Furuno Felcom-18
Radar:	2 x Furuno Far-2117
Echo Sounder:	1 x Furuno FE-700
Gyro Compass:	3 x Simard GC-80
SART:	2 x Mc Murdo S4
VHF radios:	3 x Mc Murdo R2 (portable)
EPIRB:	1 x Mc Murdo E5
Magnetic Compass:	1 x Saura SR-165
Speed Log:	1 x Furuno DS-80
Navtex Receiver:	1 x Furuno NX-700A
GPS Navigator:	1 x Furuno GP-150
Weather Fax:	1 x Furuno FAX-408

LIFE SAVING & HSE

Search Lights:	3 x 2000 W
Floodlights:	5 x 1000 W
Liferafts:	6 x 25 men
Lifejackets:	90 sets
Lifebuoys:	8 sets
Rescue Boats:	1 x 6 men

MISCELLANEOUS

Sewage Treatment:	one set
Oily Water Separator:	one set

DISCHARGE RATES

Fuel Oil:	150 m3/hr @ 75 m head
Portable Water:	100 m3/hr @ 75 m head
Drill Water:	100 m3/hr @ 75 m head
Liquid Mud:	2 x 70 m3/hr @ 75 m head
Bulk Mud/Cement:	2 x 13.0 m3/min @ 80 psi

DYNAMIC POSITIONING

DP System:	Dynamic Positioning 2
	- 2 x DGPS
	- 1 x joystick
	- 2 x operator station
	- 2 x MRU
	- 3 x wind sensor
	- 3 x gyro compass

ACCOMMODATION

Configuration:	5 x 1 man cabins 5 x 2 men cabins <u>11 x 4 men cabins</u>
Total:	59 men
Hospital:	1 x 1 men
Accommodation is fully air conditioned.	

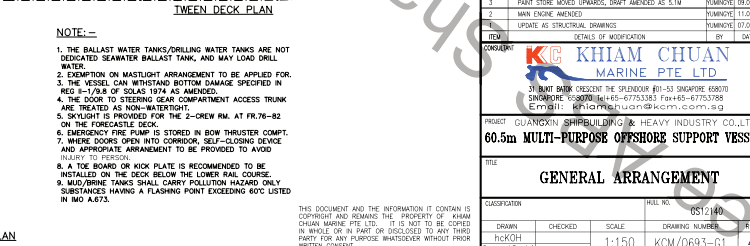
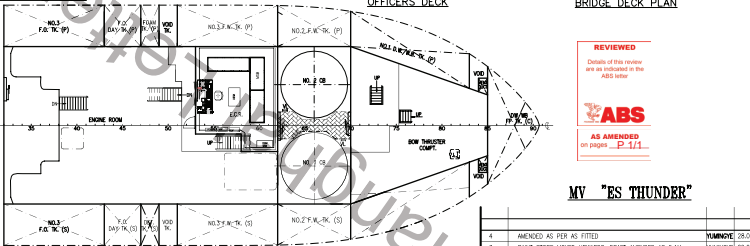
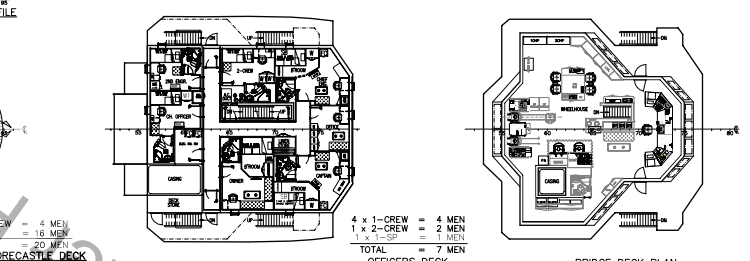
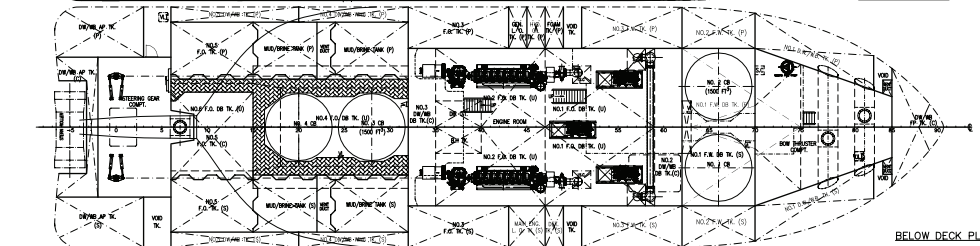
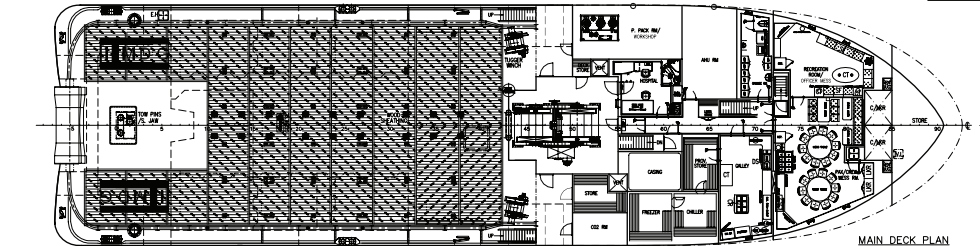
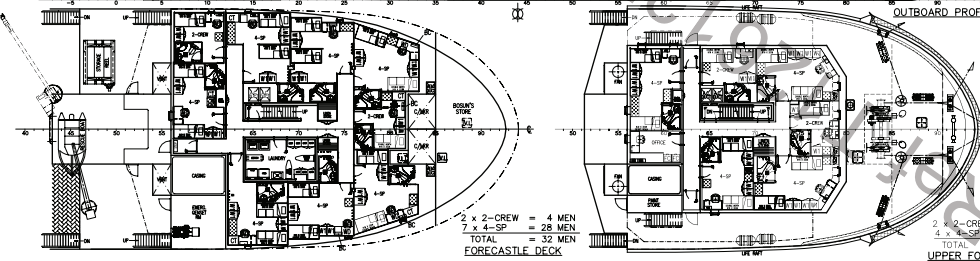
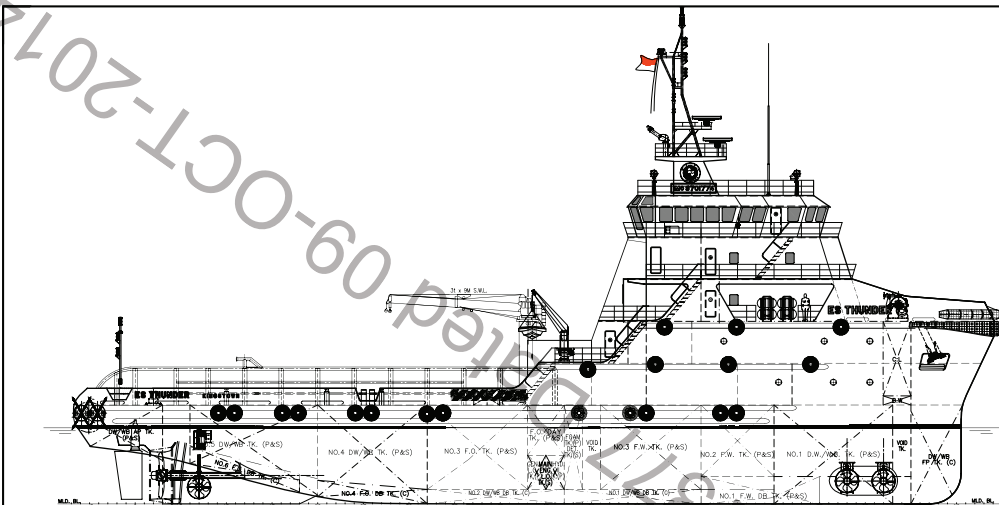
GALLEY

Refrigerator Capacity:	500 liters
Freezer Capacity:	290 liters

FIRE-FIGHTING

EXTERNAL:	FIFI Class 1 c/w Water Spray
Fire Pump:	2 x 1400 m3/hr @ 110 MLC
Water/Foam:	2 x 1200 m3/hr
Search Lights:	3 x 2000W
Dispersant S/B:	13 m3
INTERNAL:	
Emer Fire Pump:	35 m3/hr @ 5.0 bar
1 x CO2 System:	in Main Engine Room

09-OCT-2014



PRINCIPAL DIMENSIONS

LENGTH (O.A.)	60.500 M
LENGTH (W.L.)	58.151 M
LENGTH (B.P.)	54.300 M
BEAM (M.L.D.)	15.800 M
DEPTH (M.L.D.)	6.500 M
DESIGN DRAFT	5.100 M
FUEL OIL	590 M ³
FRESH WATER	410 M ³
DRILL WATER / W.B.	590 M ³
MUD/BRINE	270 M ³
DRY BULK TANKS (4x1500 FT ³)	170 M ³
CLEAR DECK AREA	360 M ²
DECK CARGO (DECK LOADING = 7T/M)	500 TONS(abt.)
MAIN PROPULSION ENGINE	2x2400 KW
SPEED (TRIALS)	12.5 KNOTS
BOLLARD PULL	83.5 TONS
CREW	14 MEN
SPECIAL PERSONNEL	45 MEN

CLASS NOTATION

●A1, ●AMS, ●
TOWING VESSEL, FIRE FIGHTING VESSEL CLASS 1,
ANCHOR HANDLING VESSEL, OFFSHORE SUPPORT VESSEL,
DPS-2, RW, CRC, BP(83.5T)

- NOTE:-
1. THE BALLAST WATER TANKS/DRILLING WATER TANKS ARE NOT DEDICATED SEPARATE BALLAST TANK, AND MAY LOSE DRILL WATER.
 2. EXEMPTION ON WASTELIGHT ARRANGEMENT TO BE APPLIED FOR THE VESSEL CAN WITHSTAND BOTTOM DAMAGE SPECIFIED IN REG 2-17.8.8 OF SOLAS 1974 AS AMENDED.
 3. THE DOOR TO STEERING GEAR COMPARTMENT ACCESS TRUNK ARE TREATED AS NON-WATERTIGHT.
 4. SPOTLIGHT IS PROVIDED FOR THE 2-CREW RM. AT FR.78-82 ON THE FORECASTLE DECK.
 5. EMERGENCY FIRE PUMP IS STORED IN BOW THRUSTER COMP.
 6. A TOE BOARD OR KICK PLATE IS RECOMMENDED TO BE INSTALLED ON THE DECK BELOW THE LOWER RAIL COURSE.
 7. MAU/BRINE TANKS SHALL CARRY POLLUTION HAZARD ONLY SUBSTANCES HAVING A FLASHING POINT EXCEEDING 60°C LISTED IN IMO A72.

THIS DOCUMENT AND THE INFORMATION IT CONTAINS IS COPYRIGHT AND REMAINS THE PROPERTY OF KHAM CHUAN MARINE PTE. LTD. IT IS NOT TO BE COPIED IN WHOLE OR IN PART OR DISCLOSED TO ANY THIRD PARTY FOR ANY PURPOSE WHATSOEVER WITHOUT PRIOR WRITTEN CONSENT.

REVIEWED		DETAILS OF THIS PROJECT ARE AS INDICATED IN THE ABS LOG	
ABS		AS AMENDED ON PAGE 11	
MV "ES THUNDER"		GENERAL ARRANGEMENT	
CLASSIFICATION		HULL NO. 0512140	
DRAWN		CHECKED	
hickgh		SCALE	
1:150		DRAWING NUMBER	
KCM/0693-G1		REV	
14		4	